

# Dorin K750 CS (x3) condensing unit

## Specifications

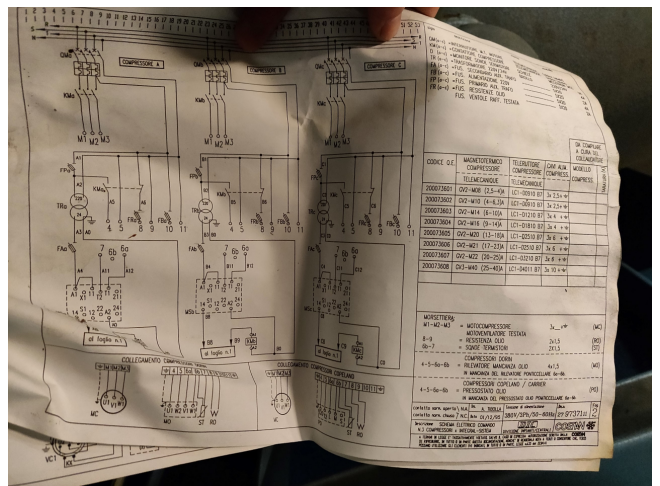
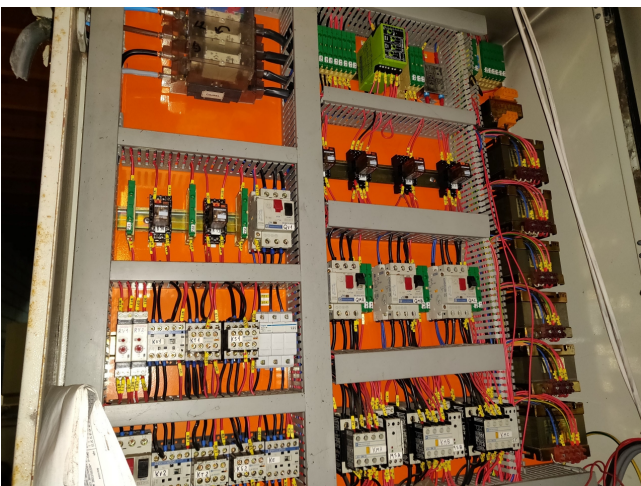
Marka	Dorin
Typ	K750 CS (x3) condensing unit
Czynnik chłodzący	Freon
kW at -10°C/+40°C	49.5
kW at -20°C/+40°C	44.1
kW at -30°C/+40°C	34.2
kW at -40°C/+40°C	25.2
Podstawa na stalowej ramie	✓
Obiornik cieczy	✓
Separator oleju	✓
Panel kontrolny	✓
m <sup>3</sup> / h	23.37
Uwagi	16.5 kW at -15°C and 45°C
Uwagi	R404a - R22 or other freon types
Package / Rack	✓
Condensing Unit	✓
Stock	1



## Description

### Used Dorin K750 CS (x3) condensing unit

Used Dorin condensing unit with 3 K470CS-01 semi hermetic reciprocating compressors. \*Why choose for HOSBV? We're not only the largest used refrigeration specialist in Europe, but also, we deliver all equipment including an extensive test, warranty and industrial cleaning. Optional we can arrange the logistics.



## DORIN

RESA FRIGORIFERA ED ASSORBIMENTO **R404A/R507** DONNÉES DE PUISSANCE  
 PERFORMANCE DATA LEISTUNGWERTE  
 Q = REFR. CAPACITY (WATT) P = POWER INPUT (KW)

Modello Model Modèle Modell	T. cond. Cond. temp. °C	Temperature Evapor. - Evaporating temperatur. - Temp. Evapor. - Verdampfendtemp.																			
		D				C				S				B				X			
		+10°	+5°	0°	-5°	-10°	-15°	-20°	-25°	-30°	-35°	-40°	14700	12000	9700	7750	6100	4730	3630		
<b>K478CS</b>	+35°	W										5,6	5,1	4,6	4,1	3,6	3,2	2,8			
		KW										9865	7900	6245	4955	3725	2900				
<b>K500CC</b>	+45°	W										8,5	4,9	4,3	3,8	3,3	2,8				
		KW										29535	24990	21200	17800	14700	12000	97000			
<b>K500SB</b>	+35°	W	29535	24990	21200	17800	14700	12000	97000			7,2	6,8	6,5	6	5,5	5	4,5			
		KW	24535	20760	17690	14840	12160	9865	7900			7,7	7,4	7	6,5	6	5,4	4,8			
<b>K500SB</b>	+35°	W																8880	6990	5420	4160
		KW																4,6	4,1	3,6	3,1
	+45°	W																7150	5570	4265	3210